

**MATERIAL**

Glass-fibre polyamide based (PA) technopolymer, black colour, glossy finish.

**BOSS CAP**

Acetal resin based (POM) technopolymer, light-grey colour, push-fit assembly, removable by pressing on the outer edge (ELESA original design).

**STANDARD EXECUTION**

Black-oxide steel boss, reamed hole. Assembly by means of a keyway or a transversal pin in the semi-machined hole f or a set screw (redrill and tap hole f).

**OTHER EXECUTIONS ON REQUEST**

Standard metric holes.

**SPECIAL EXECUTIONS ON REQUEST**

On the surface of the boss cap words, marks, graphic symbols, etc. can be tampoprinted in colours.

**ACCESSORIES ON REQUEST**

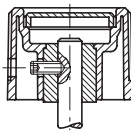
Ball and spring for clicking operation to be fitted in the assembly hole for knobs with diameter DIA ≥ 1.89 (Ø 48 mm) see ball and spring MS. (see page 543).



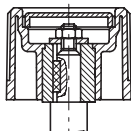
ELESA Original design



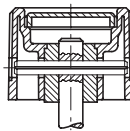
Assembly examples



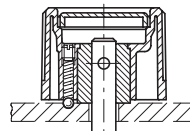
Assembly by means of a set screw



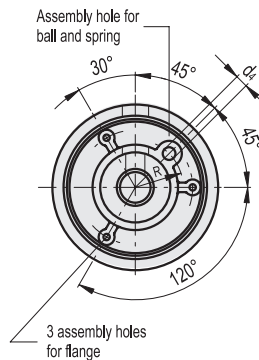
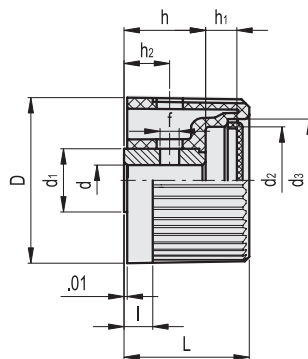
Assembly by means of a keyway



Assembly by means of a transversal pin



Assembly by means of a transversal pin and ball with adjustable pressure spring



| Code   | Description       | D    | d     | L    | l    | d1   | d2   | d3   | d4   | h    | h1   | h2   | f    | R    | ⚖    |
|--------|-------------------|------|-------|------|------|------|------|------|------|------|------|------|------|------|------|
| 930001 | IZN.380/36 A-5/16 | 1.46 | 0.312 | 1.14 | 0.24 | 0.59 | 0.98 | 1.06 | -    | 0.63 | 0.39 | 0.39 | 0.12 | -    | 0.07 |
| 930101 | IZN.380/40 A-3/8  | 1.65 | 0.375 | 1.26 | 0.28 | 0.71 | 1.14 | 1.22 | -    | 0.67 | 0.43 | 0.43 | 0.16 | -    | 0.11 |
| 930201 | IZN.380/45 A-3/8  | 1.89 | 0.375 | 1.38 | 0.31 | 0.87 | 1.26 | 1.34 | 0.13 | 0.87 | 0.39 | 0.55 | 0.16 | 0.55 | 0.19 |
| 930301 | IZN.380/50 A-1/2  | 2.05 | 0.500 | 1.54 | 0.35 | 0.87 | 1.46 | 1.54 | 0.17 | 0.87 | 0.51 | 0.55 | 0.16 | 0.59 | 0.2  |
| 930401 | IZN.380/56 A-1/2  | 2.28 | 0.500 | 1.61 | 0.39 | 1.02 | 1.65 | 1.73 | 0.2  | 1.06 | 0.43 | 0.63 | 0.2  | 0.67 | 0.29 |
| 930451 | IZN.380/63 A-1/2  | 2.48 | 0.500 | 1.73 | 0.43 | 1.02 | 1.89 | 1.97 | 0.24 | 1.18 | 0.39 | 0.63 | 0.2  | 0.75 | 0.34 |